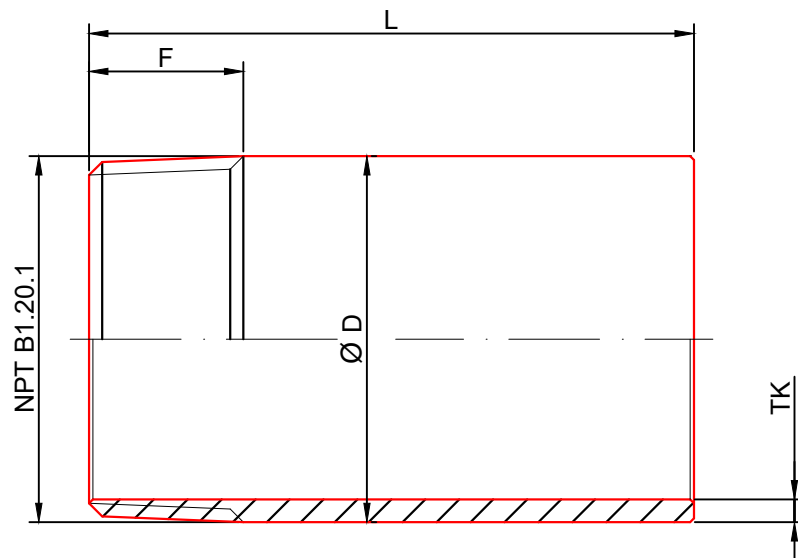


ART. 0317#1

Size	G	L	F	D	TK
1/4"	1/4"	40	11	13,7	3,02
3/8"	3/8"	40	11	17,1	3,2
1/2"	1/2"	60	14	21,3	3,73
3/4"	3/4"	60	15	26,9	3,91
1"	1"	80	18	33,7	4,55
1"1/4	1"1/4	80	18	42,4	4,85
1"1/2	1"1/2	80	19	48,3	5,08
2"	2"	100	20	60,3	5,54



NIPPLE T.B.E SCH80S NPTxPE  
 SMLS PIPE NIPPLE SCH80S NPTxPE

**TECNICATRE**  
 Stainless Steel Experience