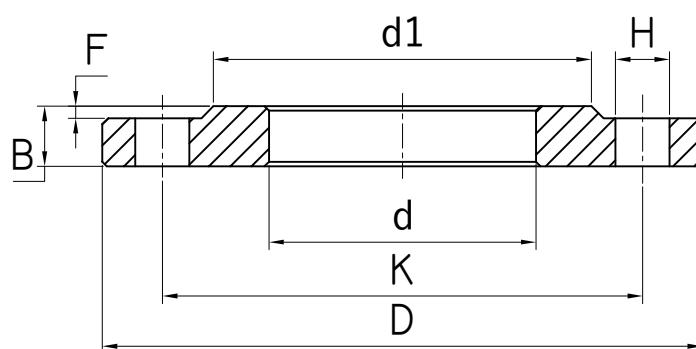


ART. 895#01B40

DN	D	K	d	B	H	N. holes	F	d1
10	90	60	18	14	14	4	2	40
15	95	65	22	14	14	4	2	45
20	105	75	27.5	16	14	4	2	58
25	115	85	34.5	16	14	4	2	68
32	140	100	43.5	18	18	4	2	78
40	150	110	49.5	18	18	4	3	88
50	165	125	61.5	20	18	4	3	102
65	185	145	77.5	22	18	8	3	122
80	200	160	90.5	24	18	8	3	138
100	235	190	116	26	22	8	3	162
125	270	220	141.5	28	26	8	3	188
150	300	250	170.5	30	26	8	3	218
200	375	320	221.5	36	30	12	3	285
250	450	385	276.5	42	33	12	3	345
300	515	450	327.5	52	33	16	4	410
350	580	510	359.5	58	36	16	4	465
400	660	585	411	65	39	16	4	535
450	685	610	462	SP	39	20	4	560
500	755	670	513.5	SP	42	20	4	615
600	890	795	616.5	SP	48	20	5	735



FLANGIA ASTM A182 EN 1092-1 01B PN 40
 FLANGE ASTM A182 EN 1092-1 01B PN 40

TECNICATRE
 Stainless Steel Experience