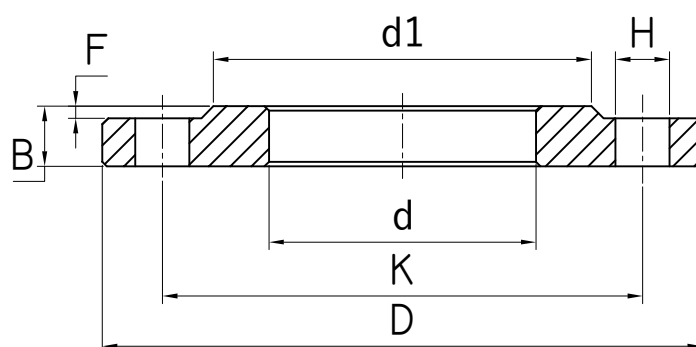


ART. 895#01B16

DN	D	K	d	B	H	N. holes	F	d1
10	90	60	18	14	14	4	2	40
15	95	65	22	14	14	4	2	45
20	105	75	27.5	16	14	4	2	58
25	115	85	34.5	16	14	4	2	68
32	140	100	43.5	18	18	4	2	78
40	150	110	49.5	18	18	4	3	88
50	165	125	61.5	20	18	4	3	102
65	185	145	77.5	20	18	4 o 8	3	122
80	200	160	90.5	20	18	8	3	138
100	220	180	116	22	18	8	3	158
125	250	210	141.5	22	18	8	3	188
150	285	240	170.5	24	22	8	3	212
200	340	295	221.5	26	22	12	3	268
250	405	355	276.5	29	26	12	3	320
300	460	410	327.5	32	26	12	4	378
350	520	470	359.5	35	26	16	4	438
400	580	525	411	38	30	16	4	490
450	640	585	462	42	30	20	4	550
500	715	650	513.5	46	33	20	4	610
600	840	770	616.5	55	36	20	5	725



FLANGIA ASTM A182 EN 1092-1 01B PN 16
 FLANGE ASTM A182 EN 1092-1 01B PN 16

TECNICATRE
 Stainless Steel Experience