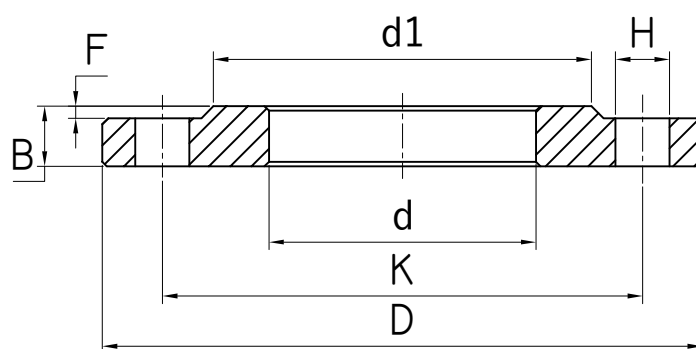


## ART. 895#01B06

DN	D	K	d	B	H	N. holes	F	d1
10	75	50	18	12	11	4	2	35
15	80	55	22	12	11	4	2	40
20	90	65	27.5	14	11	4	2	50
25	100	75	34.5	14	11	4	2	60
32	120	90	43.5	16	14	4	2	70
40	130	100	49.5	16	14	4	3	80
50	140	110	61.5	16	14	4	3	90
65	160	130	77.5	16	14	4	3	110
80	190	150	90.5	18	18	4	3	128
100	210	170	116	18	18	4	3	148
125	240	200	141.5	20	18	8	3	178
150	265	225	170.5	20	18	8	3	202
200	320	280	221.5	22	18	8	3	258
250	375	335	276.5	24	18	12	3	312
300	440	395	327.5	24	22	12	4	365
350	490	445	359.5	26	22	12	4	415
400	540	495	411	28	22	16	4	465
450	595	550	462	30	22	16	4	520
500	645	600	513.5	30	22	20	4	570
600	755	705	616.5	32	26	20	5	670



FLANGIA ASTM A182 EN 1092-1 01B PN 6  
 FLANGE ASTM A182 EN 1092-1 01B PN 6

**TECNICATRE**  
 Stainless Steel Experience