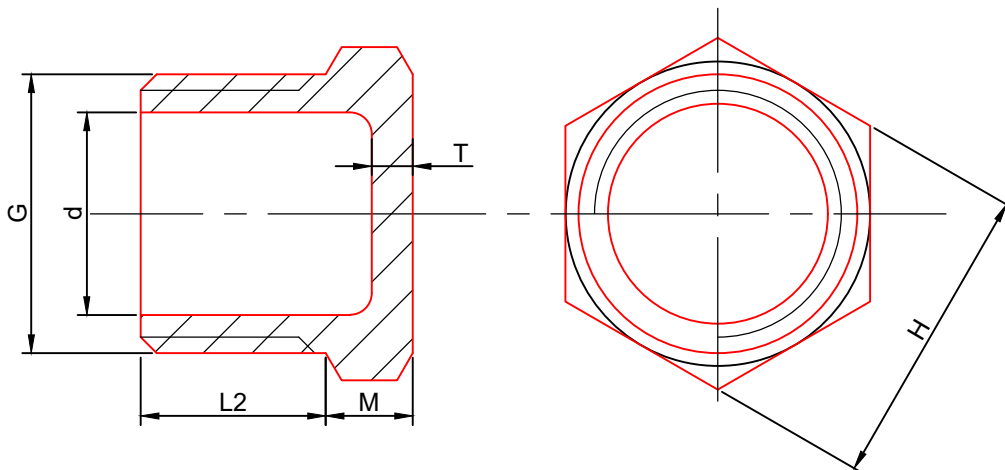


## ART. 0151

G	d <sub>max</sub>	L2 <sub>min</sub>	M <sub>min</sub>	T <sub>min</sub>	H	FACES
1/8"	5,5	8,0	4,0	1,5	11,0	6
1/4"	8,0	10,5	4,0	1,5	15,0	6
3/8"	11,5	11,0	5,0	1,5	18,0	6
1/2"	15,0	14,5	5,0	1,6	22,0	6
3/4"	20,5	15,5	5,5	1,7	28,0	8
1"	26,0	18,0	6,0	1,9	35,0	8
1"1/4	34,5	20,5	6,5	2,2	43,5	8
1"1/2	40,0	20,5	6,5	2,4	49,5	8
2"	51,0	25,0	7,0	2,7	62,0	8
2"1/2	65,5	27,0	7,0	3,2	77,5	10
3"	77,5	30,0	7,5	3,6	90,5	10
4"	101,5	36,0	8,0	4,1	117,0	10



**TAPPO MASCHIO 4144**  
**HEX PLUG ISO 4144**

**TECNICATRE**  
Stainless Steel Experience