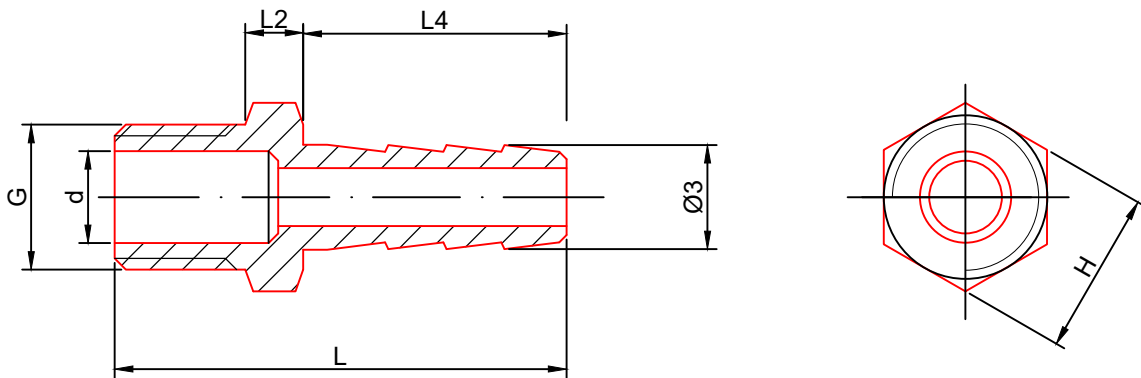


ART. 0133

G	d _{max}	Ø 3	L2	L4	L	H	FACES
1/8"	5,5	8,0	4,0	26,0	38	11,0	6
1/4"	8,0	9,0	4,0	28,0	42,5	15,0	6
3/8"	11,5	11,5	5,0	33,0	49	18,0	6
1/2"	15,0	15,0	5,0	38,0	57,5	22,0	6
3/4"	20,5	20,0	5,5	45,0	66	28,0	8
1"	26,0	27,0	6,0	52,0	76	35,0	8
1"1/4	34,5	33,0	6,5	52,0	79	43,5	8
1"1/2	40,0	39,5	6,5	56,0	83	49,5	8
2"	51,0	52,0	7,0	60,0	92	62,0	6
2"1/2	65,5	67,0	7,0	65,0	99	77,5	10
3"	77,5	80,0	7,5	70,0	107,5	90,5	10
4"	101,5	105,0	8,0	73,0	117	117,0	10



PORTAGOMMA ISO 4144
HOSE NIPPLE ISO 4144

